

| ITEM NO. | PART NUMBER | DESCRIPTION | DRAWING # | QTY. |
|----------|---------------------|------------------------------------|------------|------|
| 1 | BO-5/8 HNN | LOCK NUT 5/8 | STOCK | 8 |
| 2 | BO-5/8x1-3/4 FLHCS | FLANGE HEAD BOLT 5/8x1-3/4" | STOCK | 8 |
| 3 | FP-CLL2-7 | LEVEL LOCK FRONT REINFORCING PLATE | 90-2805 | 2 |
| 4 | FP-CLL3 FRONT | CLL-3 FRONT TUBE | 90-1803-21 | 1 |
| 5 | FP-LL STRAP 10,1875 | LEVEL LOK MOUNTING STRAP 10-3/16" | 90-2821 | 6 |
| 6 | ST 2x11ga. L 2.5 | LENGTH: 2-1/2" | STOCK | 2 |

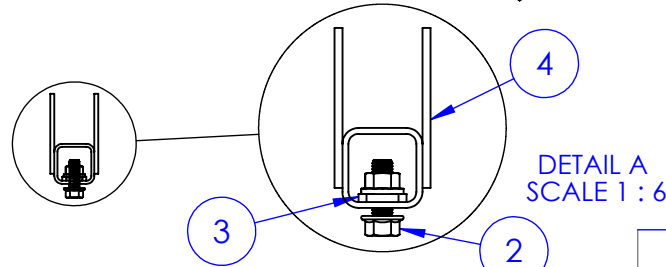
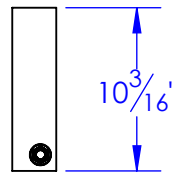
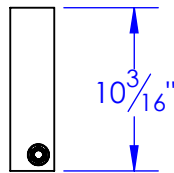
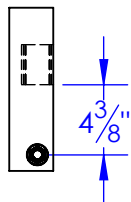
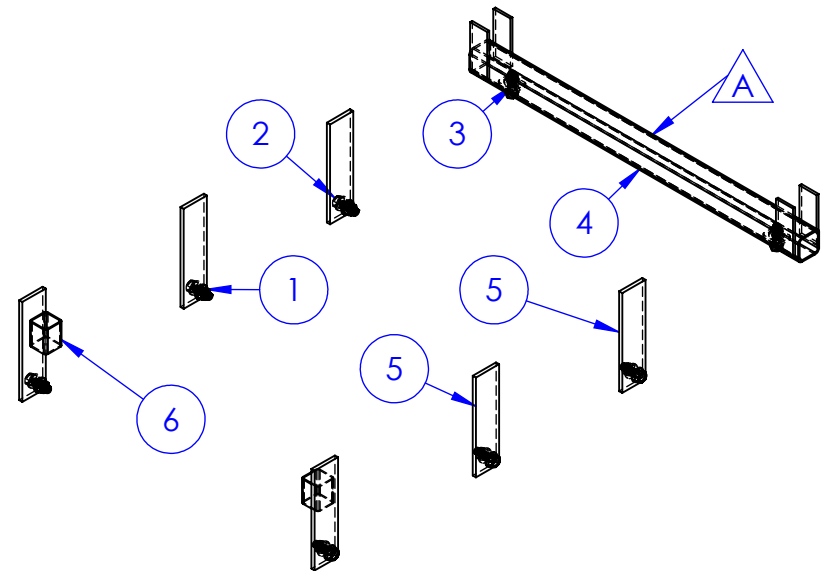
| REVISIONS | | | |
|-----------|---------------------------------|-----------|----------|
| REV. | DESCRIPTION | DATE | APPROVED |
| A | UPDATED TO NEW DWG FROM 10-1817 | 5/14/2012 | |

**1988-2000 CHEVY/GMC
60" or 84" CAB TO AXLE
SINGLE/DUAL WHEEL**

34¹/₁₆"

NOTES:

1. KIT CONTAINS 6 STRAP ASM. AND 1 CROSS TUBE.
USE 2 STRAPS PER SIDE WHEN MOUNTING ON HB 2X0
AND 3 STRAPS PER SIDE WHEN MOUNTING ON HB 3X0
OR LONGER HDRA BED.
2. FIELD WELD ON 2" ST.



DETAIL A
SCALE 1 : 6

PROPRIETARY AND CONFIDENTIAL
THE INFORMATION CONTAINED IN THIS
DRAWING IS THE SOLE PROPERTY OF TRIPLE
C INC. ANY REPRODUCTION IN PART OR
AS A WHOLE WITHOUT THE WRITTEN
PERMISSION OF TRIPLE C INC. IS PROHIBITED.

| | |
|---|-----|
| DIMENSIONS ARE IN INCHES TOLERANCES: FRACTIONAL $\pm 1/16$ ANGULAR: MACH ± 1 BEND \pm TWO PLACE DECIMAL ± 0.10 THREE PLACE DECIMAL ± 0.005 | |
| MATERIAL | --- |
| DO NOT SCALE DRAWING | |

| | |
|-------------------------|-----------|
| NAME | DATE |
| DRAWN HEATH | 4/24/2013 |
| PART # | CLL-3 |
| ASM # | |
| COMMENTS: | |
| LEVEL-LOK, CLL-3 | |

P.O. BOX 248,
SABETHA, KS 66534



| | | |
|---------------|-------------------------|---------------|
| SIZE A | DWG. NO. 90-1803 | REV. A |
| SCALE: 1:12 | WEIGHT: 40.08 | SHEET 1 OF 1 |

GENERAL INSTRUCTIONS AND CAUTIONS

Note: When welding, attach welder ground only to Hydra-Bed, not to truck frame. Use low-hydrogen rod or wire electrode. NEVER weld to the frame of the truck. Correct installation of the Level-Lok system assures Front to Rear and Side to Side leveling as well as Left to Right centering of the Hydra-Bed. Never obstruct factory overload spring mounting locations.

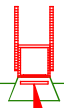
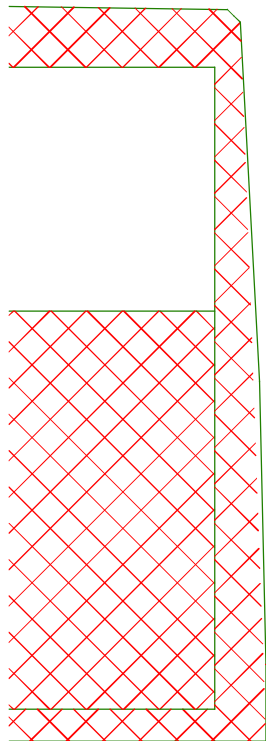
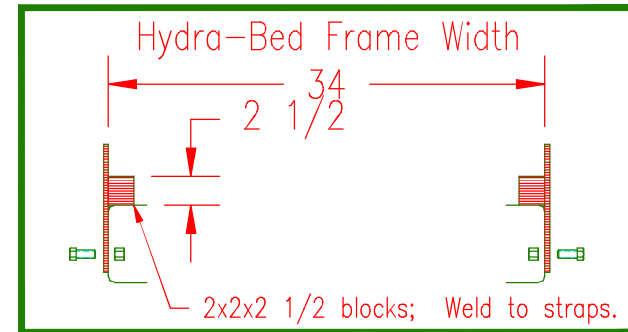
When drilling truck frame, do not damage any part of the braking, fuel or electrical systems.

Bolt 2 1/2x2 1/2x38 3/4" tube to factory frame riser using 1/4X2X3 reinforcing plates. Center Hydra-Bed between the tube risers. Weld Hydra-Bed to tube risers. Hydra-Bed frame will be resting on the tube and between risers.

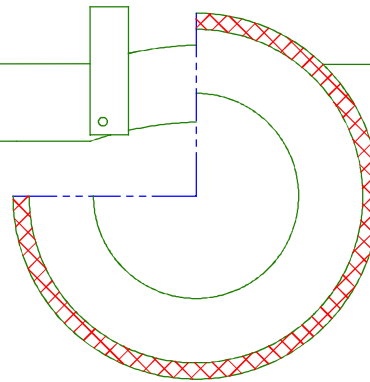
Locate center straps on full width portion of frame. Drill 5/8" hole and bolt in place. This strap does not require a block.

Locate rear CLL-3 over existing hole with rear edge of strap flush with rear edge of truck frame. Drill hole out to 5/8" if required. Place 2x2x2 1/2" tubular block on truck frame against inside of strap.

VIEW OF REAR LEVEL-LOK ON TRUCK FRAME



REINFORCING PLATE



4 3/8

CLL-3 1988-2000 Chevy/GMC Parallel Frame
60" & 84" Cab to Axle Dual Wheel

Kit contains 6 strap assemblies and 1 cross tube. Use 2 straps per side when mounting an HB 2X0 and 3 straps per side when mounting an HB 3X0 or longer Hydra Bed.